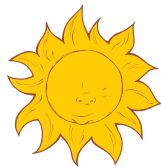
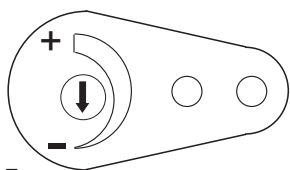


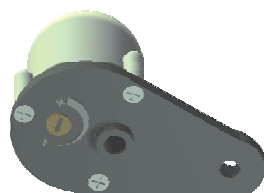
## REGOLAZIONE DEL SENSORE



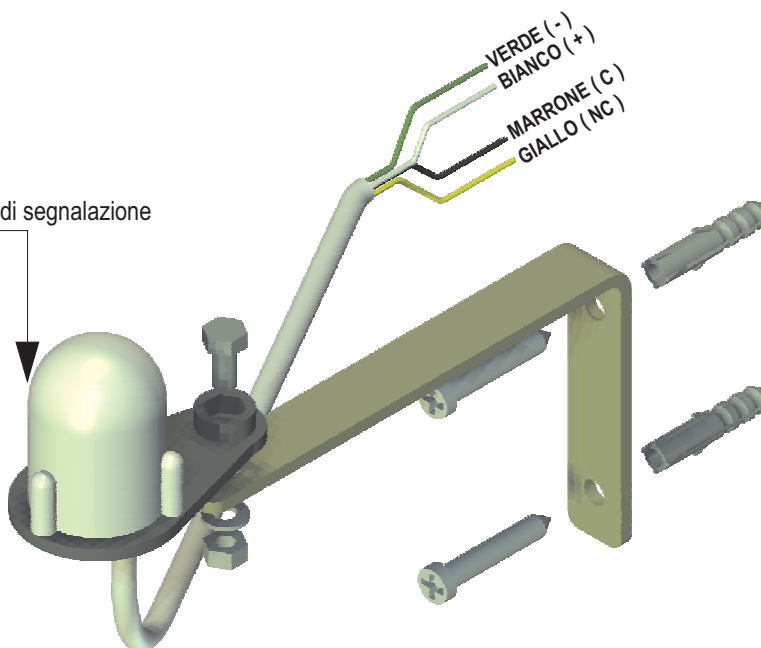
TANTO SOLE



POCO SOLE



Led di segnalazione



### DATI TECNICI

ALIMENTAZIONE	24V CC-CA
CONSUMO	43 mA
PORTATA CONTATTO	1 Amp
CONTENITORE	Plastico fotosensibile
CAMPO DI REGOLAZ.	Da 50 a 250 lux

### COLLEGAMENTI

CAVO VERDE	(-) 24V CC/CA
CAVO BIANCO	(+) 24V CC/CA
CAVO MARRONE	C (Contatto neutro)
CAVO GIALLO	NC (Contatto neutro)
CAVO DI COLLEGAMENTO STANDARD	2 MT

### AVVERTENZE

Verificare la tensione di alimentazione prima di collegare la cellula solare. Fissare la staffa e prestare attenzione che il sensore rimanga ben esposto al sole.

### TECHNICAL DATA

POWER SUPPLY	24V CC-CA
CONSUMPTION	43 mA
CONTACT CAPACITY	1 Amp
CONTAINER	Plastico fotosensibile
ADJUSTMENT FIELD	Da 50 a 250 lux

### CONNECTIONS

GREEN	(-) 24V DC/AC
WHITE	(+) 24V DC/AC
BROWN	C (Neutral contact)
YELLOW	NC (Neutral contact)
STANDARD 2 METRE CONNECTING WIRE	

### WARNING

Check the power voltage before connecting the sun cell. Fix the bracket and make sure that the sensor remains well exposed to the sun.

### CARACTERISTIQUES TECHNIQUES

ALIMENTATION	24V CC-CA
CONSOMMATION	43 mA
CAPACITE CONTACT	1 Amp
BOITIER	Plastique photosensible
CHAMP DE REGLAGE	De 50 à 250 lux

### CONNEXIONS

VERT	(-) 24V CC/CA
BLANCHE	(+) 24V CC/CA
MARRON	C (Contact neutre)
JAUNE	NC (Contact neutre)
CABLE DE CONNEXION STANDARD	2 METRES

### AVERTISSEMENTS

Vérifier la tension d'alimentation avant de connecter la cellule solaire. Fixer les brides et veiller à ce que le capteur reste bien exposé au soleil.

### TECHNISCHE DATEN

SPEISUNG	24V CC-CA
VERBRAUCH	43 mA
KONTAKTFESTIGKEIT	1 Amp
BEHALTER	Lichtempfindlicher kunststoff
EINSTELLFELD	Von 50 bis zu 250 lux

### ANSCHLUSSE

SCHWARZES	(-) 24V GS/WS
BLAUES	(+) 24V GS/WS
BRAUNES	C (Nullkontakt)
GELB	NC (Nullkontakt)
STANDARDANSCHLUSSKABEL	2 M

### HINWEISE

Vor anschluss der sonnenzelle die speisespannung ueberpruefen. Den bugel befestigen und beachten, dass der sensor gut zur sonne ausgerichtet bleibt.

### DATOS TÉCNICOS

ALIMENTACIÓN	24V CC-CA
CONSUMO	43 mA
CAPACIDAD CONTACTO	1 Amp
COJA	Plástico fotosensibile
CAMPO DE REGULACIÓN	Desde 50 hasta 250 lux

### CONEXIONES

VERDE	(-) 24V CC/CA
AZUL	(+) 24V CC/CA
MARRÓN	C ( contacto neutro )
AMARILLO	NA ( contacto neutro )
CABLE DE CONEXIÓN ESTÁR:	2 METROS

### ADVERTENCIAS

Verifique la tensión de alimentación antes de conectar la célula solar. Fije los soportes y controle que el sensor quede perfectamente expuesto al sol.